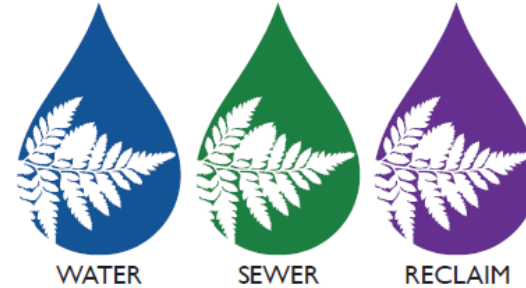




# CASSELBERRY UTILITIES



## Winter Woods Force Main Replacement Project

November 14, 2024

---

Jiovani Charres – Senior Utility Engineer  
Lynn Jarrell – Utility Projects Supervisor  
Nathalia Kail, PhD – Assistant Project Manager  
Ramon Estocapio, EI – Water Technical Specialist

# Overview

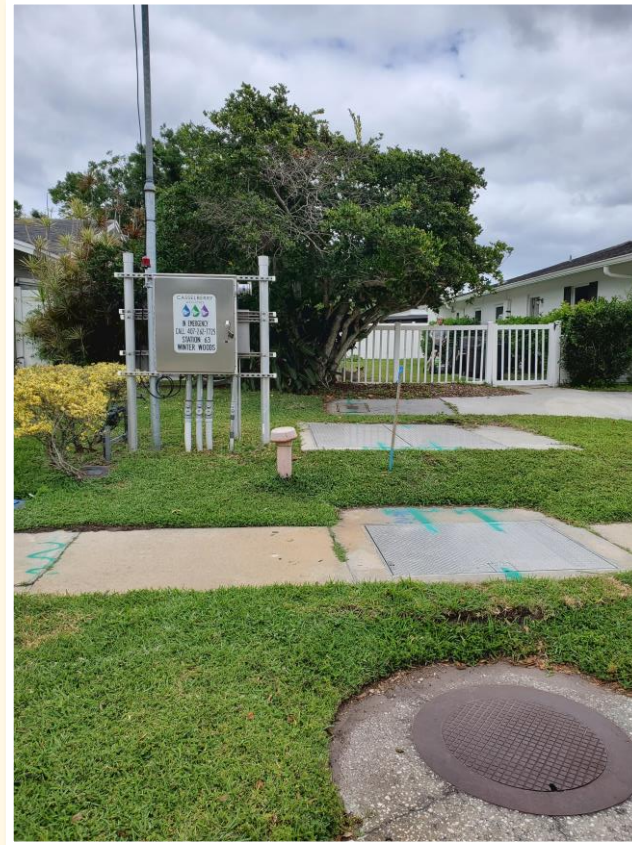
## Project Purpose and Need

This project is a component of the City of Casselberry's proactive initiative to replace aging pipelines, which are close to exceeding their designed lifespan.

Replacement of these pipelines are necessary to prevent system degradation and failures. **This project will improve the wastewater system reliability and lifespan.**

## Existing Force Main Information

- **Location:** Force main starts at a lift station by 1558 Nottingham Drive and ends at a manhole on FL-436 by the Metro Diner on Casselberry Commons.
- **Size and Material:** The majority of the force main is 12-inch diameter asbestos-cement (AC) pipe, with a 6-inch ductile iron (DI) segment routed out of the lift station.





# Winter Woods Force Main Replacement Project



## New Force Main Information

- **Location:** The new force main runs north from Lift Station #63 (1558 Nottingham Drive) to Winter Woods Blvd, then east to FL-436, and lastly north-northwest to manhole 72-09 (on FL-436 by the commercial property at 1419 FL-436).
- **New Route Benefit:** The new force main route is within public roadways rights-of-way only.
- **Size and Material:** New force main will be 12-inches in diameter, with a small 6-inch section by the lift station, and will be made of DI and HDPE materials.
- The existing force main will be left in place to be used as backup if necessary.

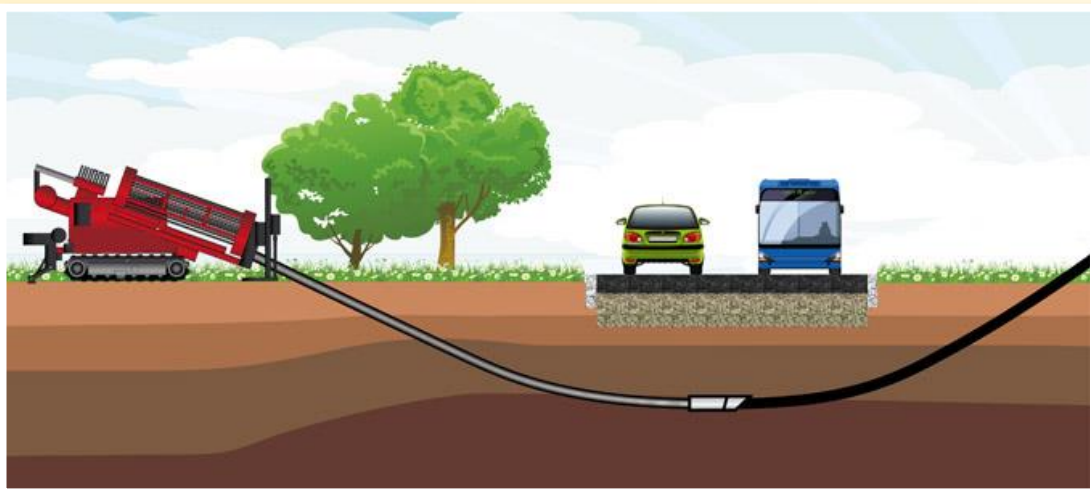
# Winter Woods Force Main Replacement Project



## Project Method and Benefits

**Horizontal Directional Drilling (HDD)** is proposed for most of this project, with few areas of open trench construction for the installation of various fittings and appurtenances.

- HDD **reduces the disturbance to residents** as it minimizes/avoids the cutting of sidewalks, landscapes, and roads.
- There will be 13 open trench locations along the new force main route, which are necessary for the HDD pipe installation. These open trenches range in size from 15 LF to 45 LF, and will be approximately 4 to 6 feet wide.
- HDD is optimal for the installation of the new force main as there are many existing shallow utilities congesting the right-of-way space on either side of the roads.





# Winter Woods Force Main Replacement Project



## Restoration

Pre-Construction Video of project limits will be taken before construction activities.

Contractor will coordinate with homeowners if grass/landscaping needs to be removed/replaced in the public Right-of-Way.

Restoration will be to original conditions (or comparable as coordinated with homeowner). This includes:

- ✓ Sprinkler lines, sod/grass, plants, sidewalk, driveway aprons, pavers, etc.

## Traffic Control

**Maintenance of Traffic:** When there is a need for any roadways to be temporarily obstructed by construction activities, re-routing of traffic will be performed by the contractor (DBE Management).

# Winter Woods Force Main Replacement Project

## Communications

Doorhangers will be handed out for:

- ✓ Pre-Construction notification
  - This notification will be handed out to notify and provide necessary contacts.
- ✓ Notifications for Right-of-Way Work
  - This includes notifications that will advise workdays & hours directly in front of property.

## City Main Point of Contact:

**Lynn Jarrell**

Phone: 407-773-3203 / Email: [ljarrell@casselberry.org](mailto:ljarrell@casselberry.org)

Will be onsite during construction activities ensuring contractors follow City/County rules and protocol.

**ADDRESS**  
CITY OF CASSELBERRY  
WATER MAIN REPLACEMENT

**ADDRESS**

Please be advised, this notice is to inform you that on,

between the work hours of hours

MPC will be conducting a shut down to switch your service over to the new water main. You will experience periods of no water while the work is being completed. You may also experience road closures. If, unforeseen circumstances may occur, work will be conducted on

If you have any questions, contact  
Lynn Jarrell (Utility Projects Supervisor) 407-773-3203

CASSELBERRY UTILITIES  
WATER SEWER RECLAIM

**CCC Cathcart**  
Construction Company - Florida, LLC  
A Safety Company That Builds Infrastructure Projects

**ATTENTION**  
Resident/ Homeowner  
Woodward Square

**Service Line Replacement**

Over the next several months, Cathcart will be working throughout the neighborhood to install new water services and sidewalks. In upcoming weeks, each individual block will receive door hangers informing each resident; which week Cathcart will be performing the above scope of work, which date to please have all personal items, and vehicles relocated to one of the assigned parking lots until your building is 100% completed. Please mark your sprinkler heads, making Cathcart's crew aware of their locations in order to prevent damage during construction. Cathcart's works hours are Monday thru Friday 7:30am to 4:00pm. Point of contacts throughout the project are as follows:

**Cathcart Construction Company**  
Joe Skeen, Superintendent  
321-375-9001

**City of Casselberry**  
Lynn Jarrell, Utility Project Coordinator  
407-773-3203

\*Note\* These are not the Doorhanger Notifications for the Winter Woods Project

# Questions?

During Project Construction,  
Please contact:

**Lynn Jarrell**

City of Casselberry  
Utilities Department  
Utility Projects Supervisor  
407-773-3203  
ljarrell@casselberry.org

**Jiovani Charres**

City of Casselberry  
Utilities Department  
Senior Utility Engineer  
(407)-262-7725 Ext. 1761  
jcharres@casselberry.org

